



February 2010

# Los Angeles Basin Geological Society Newsletter

**February 25th(Thursday), 2010 Meeting: Paul E. Blubaugh - Senior Geoscientist, Schlumberger Information Solutions in Houston, Texas.**

**Will speak on . . .**

## “A New Look for Your OLD Data”

### Speaker Abstract

Many of us in the oil and gas industry remember (fondly) the days of colored pencils, light tables, drafting departments and lease sale books. In the digital world we now (most of us anyway) conduct our work in, does this data have any value? Of course it does! This talk will examine ways to find and use maps, cross sections, other internal and published data in your software environment.

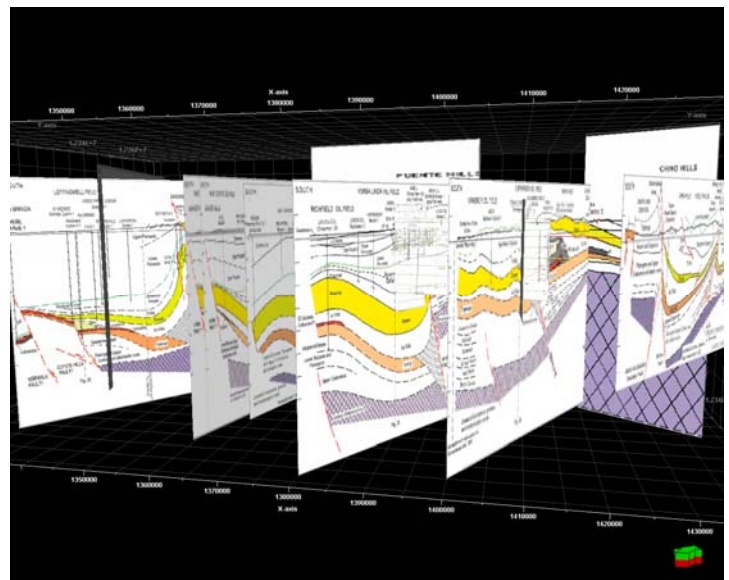
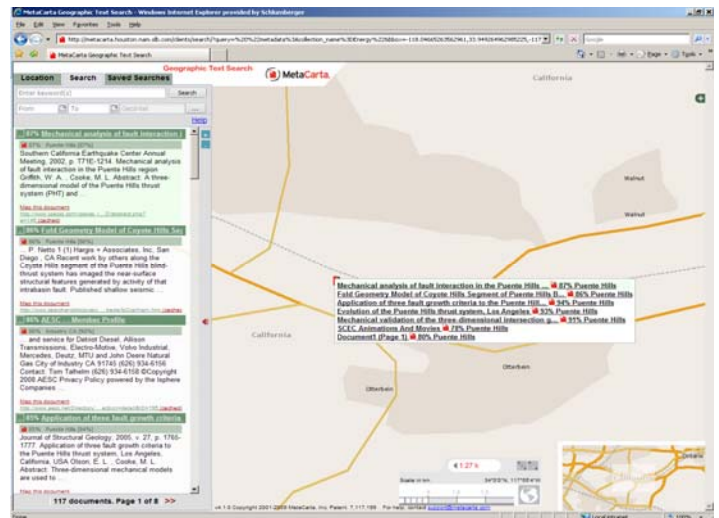
The first trick is to know the data exists. Some companies retain indexed databases of physical file data, many do not, and what about all of the publications available on the internet?

One of the advantages of moving to the digital world is the advent of search tools to speed the discovery of pertinent information. Technology which started as the ability to search by only keyword has taken giant leaps in recent years, allowing additional filters such as geographic filtering and date range filtering to truly focus into an area of interest. A keyword-only search for “Puente Hills” will get you a couple pages of car dealerships and shopping mall information – but by utilizing both geography and keywords, you can narrow results down to pertinent and valuable information.

After this first step of locating geologic data, we can do more. Maps and cross sections can be loaded into software applications where they can be visualized in 3D. At this stage they can either be co-rendered with digital data such as well logs and seismic or interpretations can be redrawn and incorporated into an interpretation model.

These techniques are especially relevant for basin modeling, either in frontier basins with limited seismic coverage or in mature basins like the North Sea, where most companies will not necessarily own enough seismic data to construct a model for hydrocarbon maturation and migration.

A detailed live example will be shown using data from the AAPG publication , Bjorkland, Tom, 2003, “The Whittier Fault Trend: Cross Sections, Structure Maps, And Well Tops In The Major Oil Producing Area Of The Northeastern Los Angeles Basin”, Datapages Search and Discovery CD-ROM Series #1, ISBN: 1588613518 shown hereby with permission from AAPG.



## Speaker Biography

Paul Blubaugh is a Senior Geologist with Schlumberger Information Solutions (SIS), the software division of Schlumberger Oil Field Services Company. Paul has been with Schlumberger for two years where he has provided technical support and consulting for users of Petrel 3D Reservoir modeling software. He has 15 years experience as a geologist and hydrogeologist with a significant amount of experience with ArcView GIS (Geographic Information Systems) ESRI mapping software and georeferencing aerial photographs to base maps. He worked his way through graduate school at Oklahoma State University where he finished his Master's of Science thesis on "The Hydrodynamics of the Hunton Group Anadarko Basin, Oklahoma and Texas Panhandle" and graduated in 1999. Paul is married with 3 children.

## Meeting Time, Place, Cost and Reservations

### Typical Meeting Agenda

**Lunch Served: 11:30 AM to 12:00PM**  
**Announcements: 11:45 AM to 12:00 PM**  
**Guest Speaker: 12:00 PM to 12:30PM**  
**Questions/Close: 12:30 PM to 12:45 PM**

### Place:

**The Grand at Willow Street Conference Center** located at 4101 East Willow Street, Long Beach, CA. (562-426-0555). Take Lakewood Boulevard south from the San Diego Freeway (405), turn west onto Willow Street and turn right onto Grand Avenue at the sign for the Center. Park free in the garage structure.

### Cost:

**Lunch and Speaker: \$20.00 with reservations**  
**\$25.00 without reservations**  
**Student: FREE (Lunch and Speaker)**

### Meeting Reservations:

Make your reservations using our web site at [www.labgs.org](http://www.labgs.org), by calling Marieke at (562) 624-3364., or emailing Marieke\_Gaudet@Oxy.com. **Reservations made prior to Tuesday before the meeting is appreciated**, but walk-ons are welcome.

## Contact Us – The LABGS Board

President: Bill Long (213) 225-5900 x 205  
[William.long@breitburn.com](mailto:William.long@breitburn.com)

VP & Program : Greg Hummel  
(213) 225-5900 x 251  
[Greg.hummel@breitburn.com](mailto:Greg.hummel@breitburn.com)

Treasurer: Bert Volger  
[hvogler@kleinfelder.com](mailto:hvogler@kleinfelder.com)

Secretary: Marieke Gaudet (562) 624-3364  
[marieke\\_gaudet@oxy.com](mailto:marieke_gaudet@oxy.com)

Scholarships: Jean Kulla (949) 500-3095  
[k2mobile@MSN.com](mailto:k2mobile@MSN.com)

**OUR WEB SITE ADDRESS IS:**  
[www.labgs.org](http://www.labgs.org)